

ROYALE 180



Characteristics of the property

Name	ROYALE 180
Address	rue Royale 180
Town	1000 Bruxelles
Flood zone	not located in a flood zone
Year of construction	1995
Price range	From 295.000 € to 28.650.000 €
Surface area range	From 127 m ² to 12.148 m ²
Number of floors	9
Unit(s) type	Offices, Retail
Soil certificate	Yes
Elevator	Yes
Heating type	Gas
Air conditioning	Yes
Indoor parking	Yes

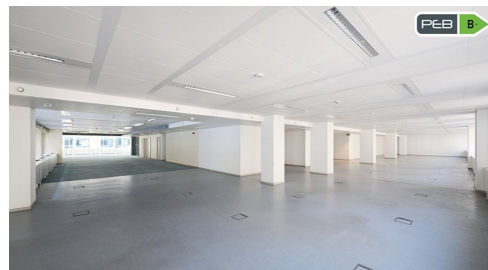
13 UNITS IN THIS PROPERTY

For sale

ROYALE 180 - B2.03

1000 Bruxelles

Price	1.500.000 €
Category	Offices
Area surface	582m ²
Floor	2



ROYALE 180 - B2.03 + B2.04

1000 Bruxelles

Price	1.750.000 €
Category	Offices
Area surface	697m ²
Floor	2



ROYALE 180 - B2.02 + B2.04

1000 Bruxelles

Price	2.200.000 €
Category	Offices
Area surface	883m ²
Floor	2



ROYALE 180 - 1st floor

1000 Bruxelles

Price	4.000.000 €
Category	Offices
Area surface	1811m ²
Floor	1



ROYALE 180 - B2.01 + B2.02

1000 Bruxelles

Price	4.100.000 €
Category	Offices
Area surface	1639m ²
Floor	2



ROYALE 180 - Garden + ground floor

1000 Bruxelles

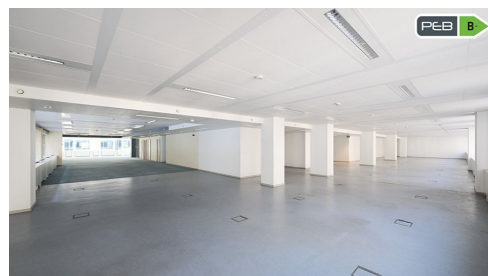
Price	4.500.000 €
Category	Offices
Area surface	2410m ²
Floor	-1-2-3+0



ROYALE 180 - 2nd floor

1000 Bruxelles

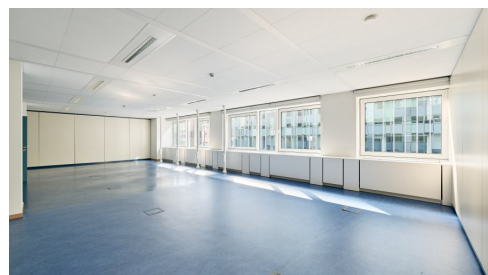
Price	5.900.000 €
Category	Offices
Area surface	2336m ²
Floor	2



ROYALE 180 - 3rd floor

1000 Bruxelles

Price	5.900.000 €
Category	Offices
Area surface	2335m ²
Floor	3



ROYALE 180 - 1st + 2nd floor

1000 Bruxelles

Price	9.900.000 €
Category	Offices
Area surface	4147m ²
Floor	1+2



ROYALE 180 - Garden -> 4th floor

1000 Bruxelles

Price	28.650.000 €
Category	Offices
Area surface	12148m ²
Floor	-3-2-1+0+1+2+3+4



ROYALE 180 - COM0.04

1000 Brussels

Price	295.000 €
Category	Offices
Area surface	127m ²
Floor	0+1

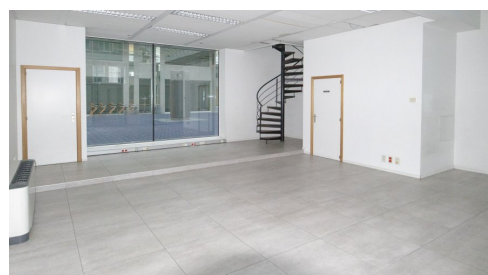


For rent

ROYALE 180 - rent - COM0.04

1000 Brussels

Monthly rent	2.117 €
Categories	Offices - Retail
Area surface	127m ²
Floor	0+1



For investment

ROYALE 180 / Invest 1.026 m² retail + vacant

1000 Bruxelles

Price	2.500.000 €
-------	-------------

Category	Retail
----------	--------

Area surface	1026m ²
--------------	--------------------

Yield (%)	6.39%
-----------	-------



Description

The "Royale 180", a prestigious mixed-use building, offers offices, retail, archives, apartments and parking spaces. Entrances to offices, retail spaces and apartments are split.

Built in 1995, with well-maintained offices and an action plan to meet current and future energy standards.

The Royale 180 is ideally served by public transport: railway stations "Brussels-Central" and "Brussels-Congress" within walking distance. Metro (Botanique), tram (92 and 93) and bus (65 and 66) at 100 meters. Villo station in front of the building. Underground parking spaces available.

Contact

Vincent Schobbens
CEO SODIMCO S.A.
Ch. de Louvain 431F
vs@sodim.co
B-1380 Lasne



info@sodim.co



Non contractual document

BE0419651494

